



**BOX SYSTEM, full vehicle tracking**

- Welcome
- Features
- Tracking
- Reports
- Costs
- Free Trail



## Welcome

Thank you for your recent enquiry regarding our full vehicle tracking service.

- The BOX system offers you a complete web based monitoring solution for maximising fleet efficiency and productivity.
- By utilising mobile phone GPRS networks and satellite GPS technology, our waterproof device offers the convenience of a simple and effective 24/7 vehicle tracking, asset management and security package.

## Features

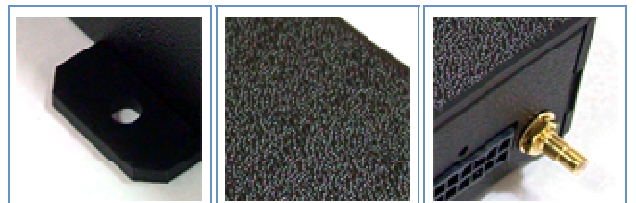
Box key features:

- **IP57 rated water proof. Battery Life of up to 5 years, if only one location is required each day.** Ability to report in every 5 mins during movement.
- 24/7 tracking on an unlimited number of vehicles with regular updates of exact location
- Detailed mapping, street level accuracy within UK & Ireland
- Vehicle Odometer readings and route history report
- Vehicle and non-powered asset tracking options.
- Helps you to track stolen assets
- Vehicle behaviour monitoring, including; out of hours mileage, speeding, excessive driving time

## The Box Vehicle Tracking System

Want to find out more about the Box System?

Email :- [sales@followus.co.uk](mailto:sales@followus.co.uk)



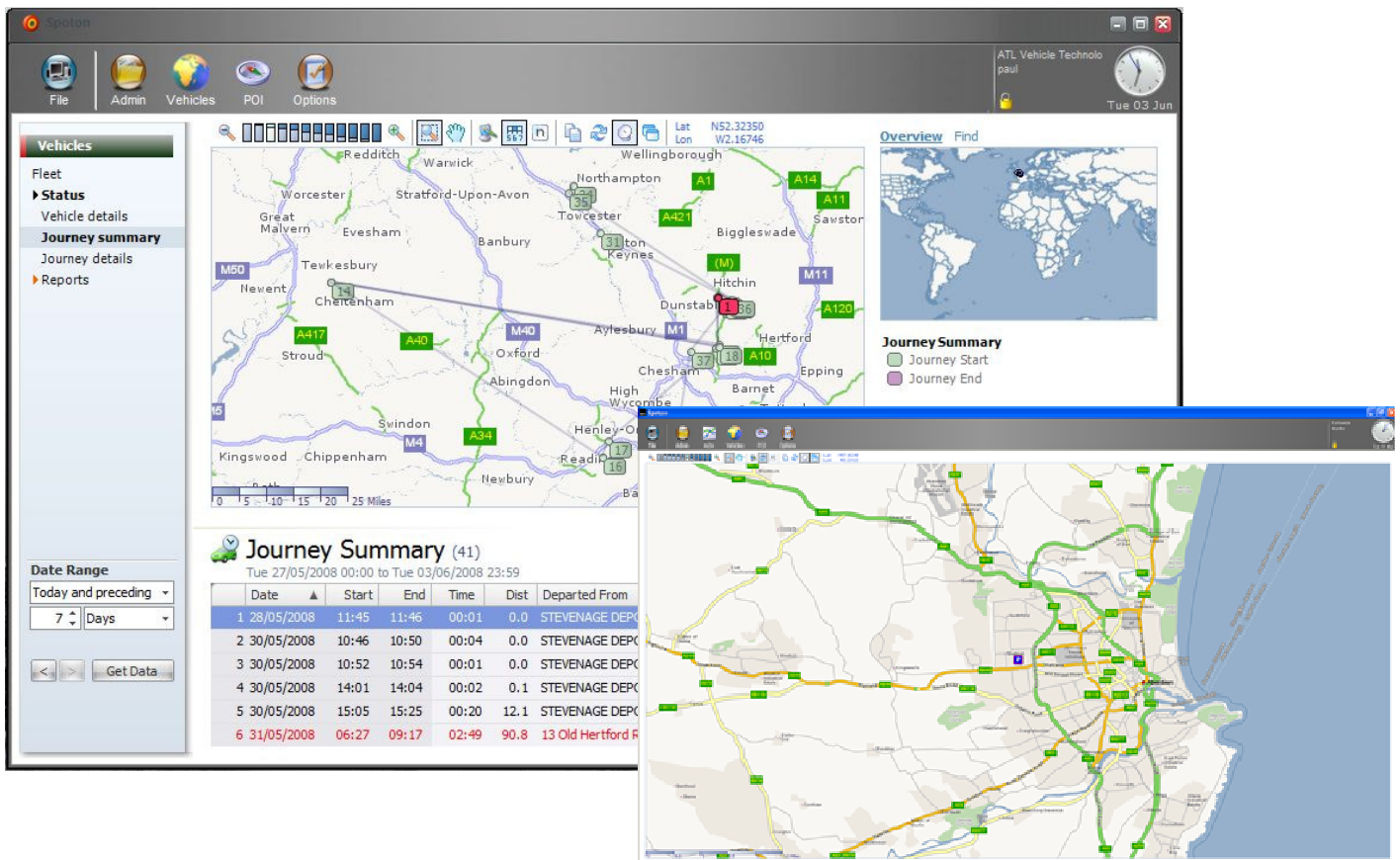
## Benefits

Box benefits include:

- Covert installation – Simple to set up. Simple to use.
- Improved utilisation of your mobiles assets – both vehicles and drivers
- Accurate service scheduling – text/email reminders for vehicle maintenance
- Reduced running costs
- Better customer satisfaction
- Enhanced asset and fleet security
- Informative management reports
- Simple to use, web based software accessible from anywhere via any Internet connection

## Tracking Software

The BOX system utilises simple to use, web based software accessible from anywhere via any Internet connection



## Software Reports

- **Daily Activity** Shows all journeys made within a day for the selected vehicles. Compares multiple vehicles
- **Daily Visits** Shows all locations visited within a day for the selected vehicles
- **Time Sheet** Drivers time sheet report detailing the start and end time of each day
- **Out of Hours** Shows all journeys outside of the designated operating times for selected vehicles
- **Late Arrival etc.** Details the times a vehicle was late arriving or early departing a designated Point of Interest
- **Odometer** Show the odometer reading for selected vehicles

## Software Screenshots

The screenshot displays the Followus software interface. On the left, a sidebar menu includes 'Vehicles', 'Fleet', 'Status', and 'Reports'. The 'Reports' section is expanded, showing options like 'Overview', 'Daily activity', 'Daily visits', 'Time sheet', 'Out of hours', 'Late/early', and 'Odometer'. The main content area is titled 'Reports' and contains sections for 'Daily Activity', 'Daily Visits', 'Time Sheet', 'Out of Hour Movements', 'Late Arrival / Early Departure', and 'Odometer'. A 'Journey Details' window is open, showing a map and a table of events for a vehicle named 'BOX TEST NANO UNIT (AUDI A6, BLACK)'. The table lists events such as 'Parked', 'Ignition on', 'Moving', and 'Stationary' with associated speed, distance, bearing, and location data.

ID	Date	Event	Speed (mph)	Distance (miles)	Bearing	Location	Latitude	Longitude
1	11/03/2008 00:01	Parked	0	0.0	NNW	2 Woodland Rise, Holywell, Bedfordshire, LU8 2	N51.84655	WD.52032
2	11/03/2008 02:01	Parked	0	0.0	S	3 Woodland Rise, Holywell, Bedfordshire, LU8 2	N51.84675	WD.51940
3	11/03/2008 04:00	Parked	0	0.0	ESE	3 Woodland Rise, Holywell, Bedfordshire, LU8 2	N51.84655	WD.51963
4	11/03/2008 06:01	Parked	0	0.0	W	3 Woodland Rise, Holywell, Bedfordshire, LU8 2	N51.84697	WD.51946
5	11/03/2008 08:01	Parked	0	0.0	NE	3 Woodland Rise, Holywell, Bedfordshire, LU8 2	N51.84451	WD.51977
6	11/03/2008 08:04	Ignition on	0	0.0	NNW	3 Woodland Rise, Holywell, Bedfordshire, LU8 2	N51.84462	WD.51953
7	11/03/2008 08:05	Moving	10	0.4	WSW	6 Holywell Road, Holywell, Bedfordshire, LU8 2	N51.84922	WD.52036
8	11/03/2008 08:08	Moving	21	0.9	NNE	Dunstable Road, Kensworth, Dunstable, Bedfordshire, LU8 2	N51.85104	WD.52040
9	11/03/2008 08:07	Moving	40	1.6	ENE	B4540, Kensworth, Dunstable, Bedfordshire, LU8 2	N51.85344	WD.52093
10	11/03/2008 08:08	Moving	27	2.1	ESE	B4540, Common Road, Kensworth, Bedfordshire, LU8 2	N51.85150	WD.50214
11	11/03/2008 08:09	Moving	10	2.3	E	B4540, 30 Common Road, Kensworth, Bedfordshire, LU8 3	N51.85015	WD.49954
12	11/03/2008 08:10	Moving	46	3.0	ESE	B4540, 39 Lynch Hill, Kensworth, Dunstable, Bedfordshire, LU8 3	N51.85055	WD.49973
13	11/03/2008 08:11	Moving	55	3.8	NNW	A6, Kensworth, Dunstable, Bedfordshire, LU8 3	N51.85888	WD.48178
14	11/03/2008 08:12	Moving	8	4.6	NNW	A6, Caddington and Slip End, Dunstable, Bedfordshire, LU8 3	N51.86880	WD.48218
15	11/03/2008 08:13	Stationary	0	4.6	SSE	A6, Kensworth, Dunstable, Bedfordshire, LU8 3	N51.86870	WD.48218

## Costs

The box system offers an excellent value for money vehicle tracking solution:

- GPS tracking unit, one off cost, **only £275.00\***
- Access to web tracking application including SIM for £15.00\* per month or £150.00\* annually.
- Installation, if required, £60\*
- 30 day **no quibble money back guarantee** (subject to conditions, excludes installation) \* all prices ex VAT

## Free Demonstration

Please test the product now! Follow the steps below to view live tracking taking place:

- Use this link <http://www.boxgateway.com/boxviewer/installations/BoxViewer.Setup.x86.msi> to download
- Enter Company : Atl
- Enter User : paul
- Enter Password : martin
- Investigate the software real time and discover the many features and benefits!

## Followus

**websites** :- [www.followus.co.uk](http://www.followus.co.uk)  
[www.followgb.co.uk](http://www.followgb.co.uk)

*Mobile phone tracking*  
*GPS tracking*

**email** :- [sales@followus.co.uk](mailto:sales@followus.co.uk)

**telephone** :- 0871 425 4422

**fax** :- 0870 429 2712

**address** :- Followus Limited,  
Westley House,  
42 Coldharbour Lane,  
Harpenden,  
Hertfordshire, AL5 4UN